

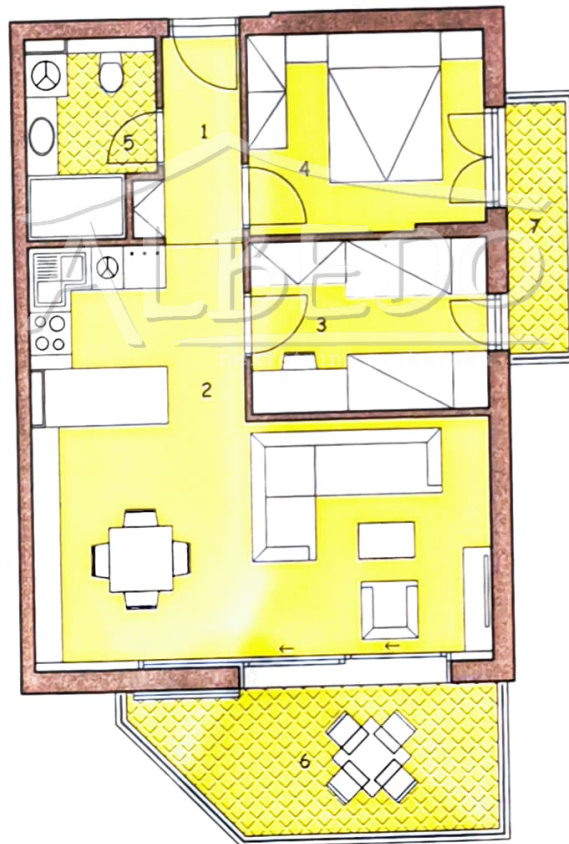
r.b.	PROSTOR	m <sup>2</sup>	
1.	HODNIK	3,50	
2.	KUHINJA+DN.BORAVAK	29,60	
3.	SOBA	8,00	
4.	SOBA	9,30	
5.	KUPATILO	4,70	
6.	BALKON		9,40
7.	BALKON		3,00
UKUPNO:		55,10	12,40

## STAMBENA ZGRADA - PROMAJNA



STAN : S4  
1.kat

ulaz



+ 20 m<sup>2</sup> semtija  
249,000,00 €